

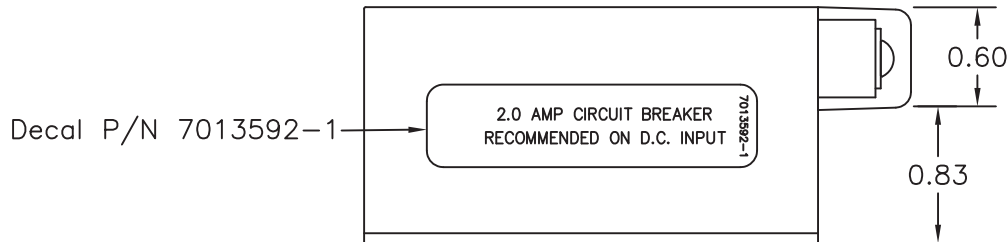
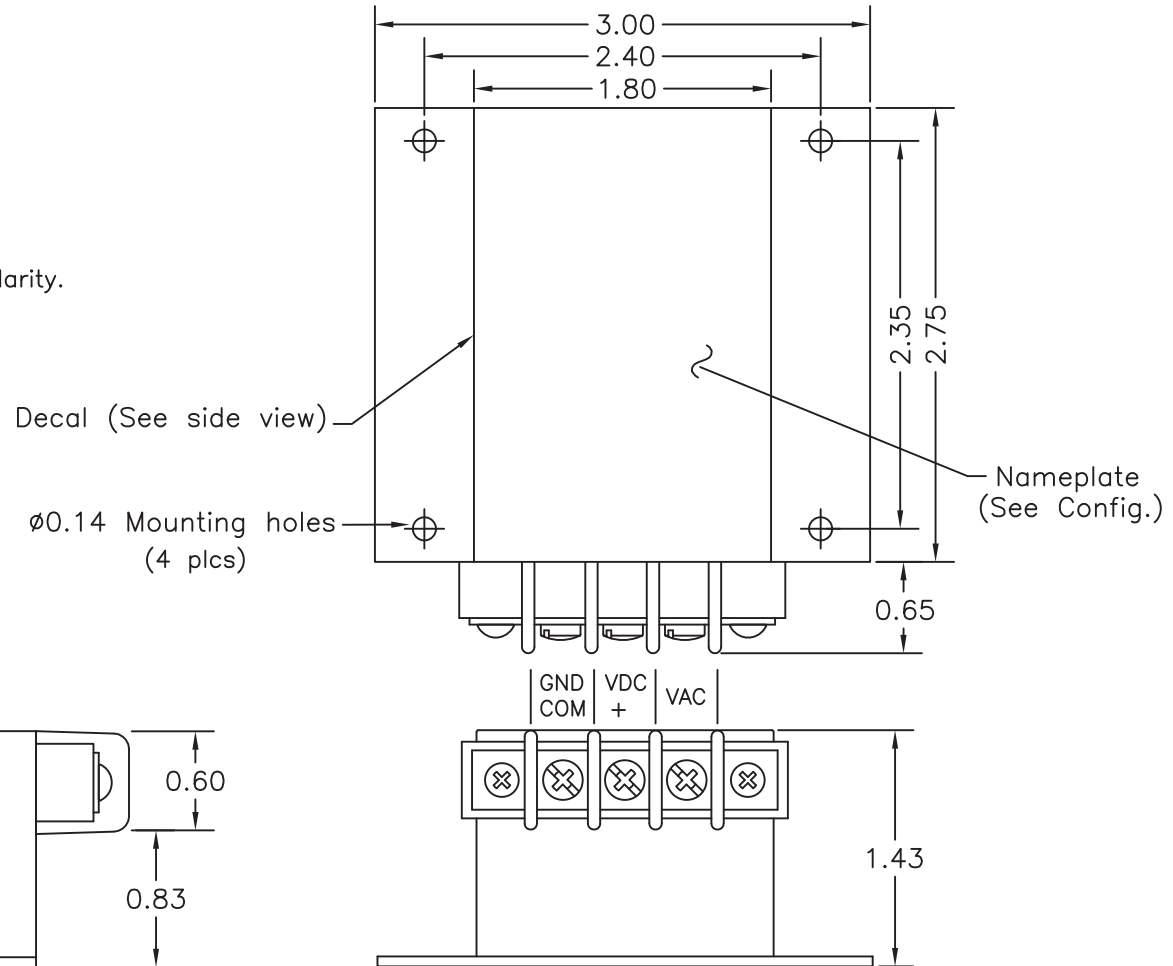
Configuration		
Dash #	Nameplate	Top Level Assy
-28	6016463	9017365

Revisions				
ECO	Rev.	Description	Date	Approved
	A	Add P/N and Ref. dwg numbers.	7/26/95	BB
508	B	Redraw in CAD on updated title block.	2/19/97	Sch
1377	C	Dwg number was 1017254. Add nameplate P/N.	10/1/99	JBR
1777	D	Add decal P/N 7013592.	6/16/00	Sch, MTH
5617	E	Removed -14. Top Level Assembly was 8012015. Updated Title Block. 7013592-1 was 7013592. Added Note 8. Added 2.0 Amp Max to Note 1.	7/13/11	MKN/BAW
5702	F	Add value of input current at no load and full load to Spec. # 1	1/25/12	DDT/MKN

Logo and company name have been changed in title block only. No functional or technical changes have been made. Revision remains unchanged.

Specifications:

- 1) P/N MD26-28.
Input: 11-40VDC; 0.06-0.22A at no load.
0.44-1.80A at full load.
Start up Current: 2.0A Maximum.
Output: 26VAC, 400Hz, Single Phase, 10 Volt-Amp.
- 2) Weight: 0.5lbs.
- 3) Temperature: -55°C to +70°C.
- 4) Humidity: 0% to 95% @ 25°C.
- 5) Altitude: -1,000ft. to +50,000ft.
- 6) Vibration: 0.02 inch max. double amplitude;
max. acceleration of 3g from 5 to 55 Hz.
- 7) Unit is protected against input transients and reverse polarity.
- 8) Modification Status:
Mod 0: N/A
Mod 1: Incorporates sine wave output and stable AC voltage/frequency.



Side View

UNLESS OTHERWISE SPECIFIED,
ALL DIMENSIONS ARE IN INCHES.
TOLERANCE:
FRACTIONAL=±1/64
.XX=±0.015
.XXX=±0.005
.XXXX=±0.002
ANGULAR=±0.5°
CONCENTRICITY: 0.005 TIR
BREAK ALL SHARP EDGES
THREADS PER MIL-S-7742

DRAWN:
S. Hoang
6/22/92

APPROVED:
BB
6/22/92

This document discloses proprietary information of Mid-Continent Instrument Co. It may be reproduced or disclosed only with written permission of Mid-Continent Instrument Co. and is not to be used in any way detrimental to the interests of Mid-Continent Instrument Co.

TRUE BLUE POWER
A division of Mid-Continent Instrument Co., Inc.

TITLE:
DC - AC Inverter

PART NUMBER:
MD26

SCALE: None

DO NOT SCALE THIS DRAWING

SHEET 1 of 1